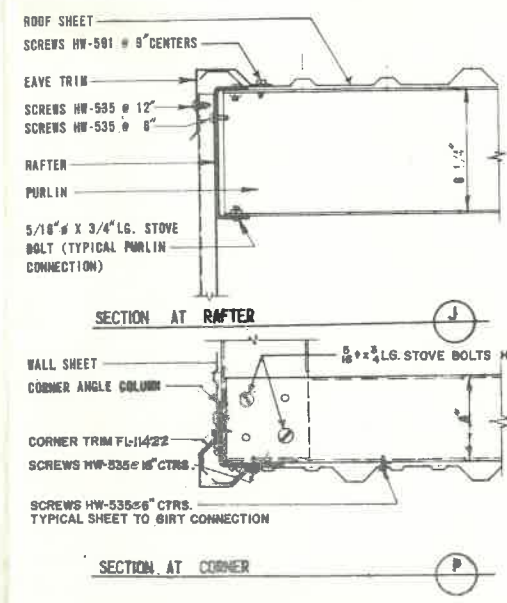
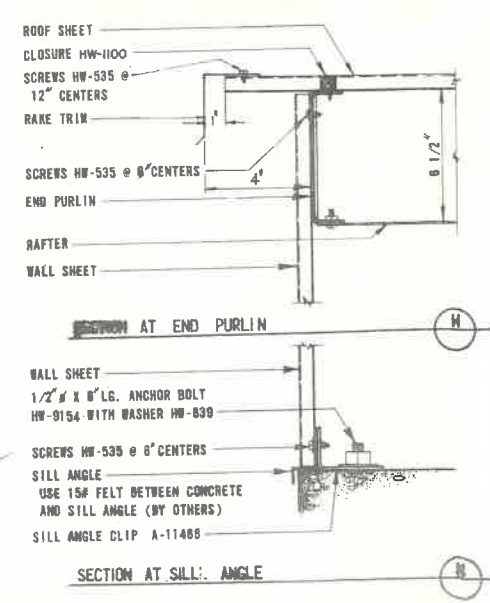


1253 Independence Dr

SUGGESTED ERECTION PROCEDURE

1. ERECT THE FOUR CORNER COLUMNS LEAVING THE ANCHOR BOLT NUTS LOOSE.
2. ATTACH THE SILL ANGLE TO THE COLUMNS. THE SILL ANGLE BOLTS WILL CORRECTLY POSITION THE CORNER COLUMN.
3. ATTACH RAFTERS TO THE COLUMNS AND BOLT THE END PURLINS AND THE INTERMEDIATE PURLINS BEGINNING AT ONE END AND WORKING TOWARDS THE OTHER END.
4. ERECT THE WALL GIRTS EXCEPT THE WALLS HAVING DOORS.
5. ATTACH THE SILL ANGLE CLIPS. CHECK TO INSURE ALIGNMENT OF THE SILL ANGLE.
6. AT THIS POINT THE FRAMEWORK SHOULD BE PLUMBED AND ALL BOLTS TIGHTENED.
7. ERECT AND PLUMB THE DOOR FRAMES. FIELD DRILL THE RAFTER OR PURLIN FOR THE JAMB EXTENSION.
8. CUT AND ERECT THE GIRTS AND SILL ANGLE BETWEEN THE DOOR JAMBS AND THE CORNER COLUMNS.
9. INSTALL THE DOOR LEAF.
10. ATTACH THE JAMB TRIM AND HEADER TRIM AROUND THE DOOR OPENING.
11. CHECK THE COMPLETE FRAMEWORK FOR ALIGNMENT BEFORE SHEETING.
12. ERECT THE WALL SHEETS STARTING AT THE END OF THE BUILDING EXCEPT ON WALLS HAVING DOORS. SEE SECTION "P" AND 577 FOR DETAILS.
13. ERECT THE ROOF SHEETS AND EAVE TRIM. SEE DETAILS "H", "J", AND "I" FOR THE INSTALLATION DETAILS AND FASTENING INSTRUCTIONS. PARTICULAR EMPHASIS SHOULD BE PLACED ON THE CORRECT INSTALLATION OF THE ROOF SEALER.
14. ERECT THE CORNER TRIM AND RAKE TRIM. SEE SECTION "H" AND "I" FOR FASTENING INSTRUCTIONS.
15. FOR BUILDINGS HAVING THE STRAN ALUMINUM OR STEEL WINDOWS ERECT THE WINDOW IN CONJUNCTION WITH THE WALL SHEETS.
16. SEE DWG. 60T-41 FOR ADDITIONAL OVERHEAD DOOR DETAILS.



NOTE:

1. HW-535 IS A #10 X 5/8" LG. SLOTTED HEX WASHER HEAD SELF TAPPING SCREW.
2. HW-581 IS A #14 X 3/4" LG. SHEET METAL SCREW W/COMBINATION STEEL & NEOPRENE WSR.

NO.	REVISIONS	DATE	DRWN	CHKD.
1	GENERAL			
2	FOR ISSUE TO TRADE			
3	LENGTH LW-9154			
4	ADDED CORN. DETAIL			
5	GENERAL			

DATE 4-18-61

SCALE NONE

DRAWN Joppa

APPROVED WGT

CHECKED GEL

APPROVED PEA

Stran-Steel

STRAN-STEEL CORPORATION (UNIT OF NATIONAL STEEL)

GENERAL OFFICES HOUSTON, TEXAS

CONSTRUCTION DETAILS

FRAMING AND SHEETING

'KOMPAK' BUILDING (M3)

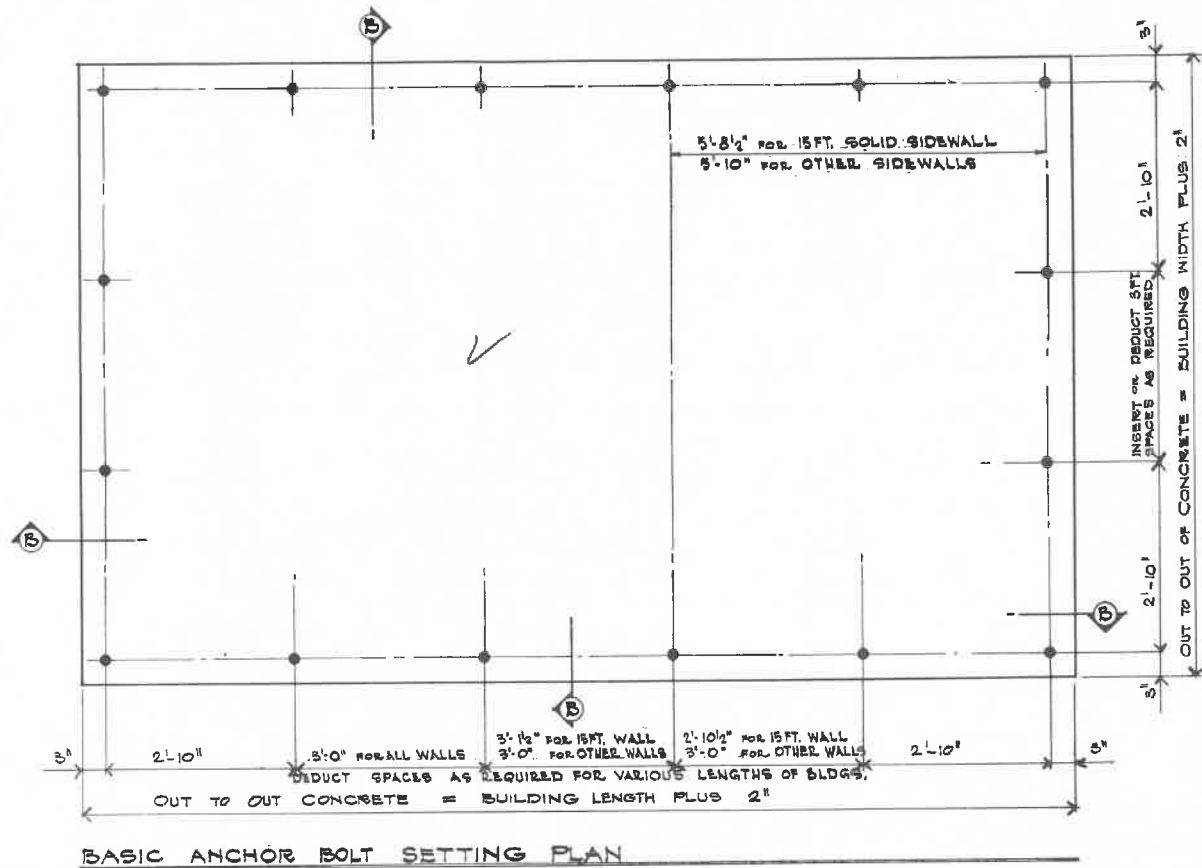
A.E.O. No. 3218

SHEET No. KB-1

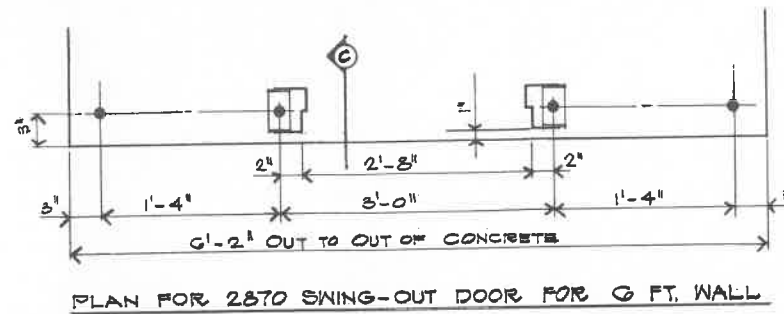
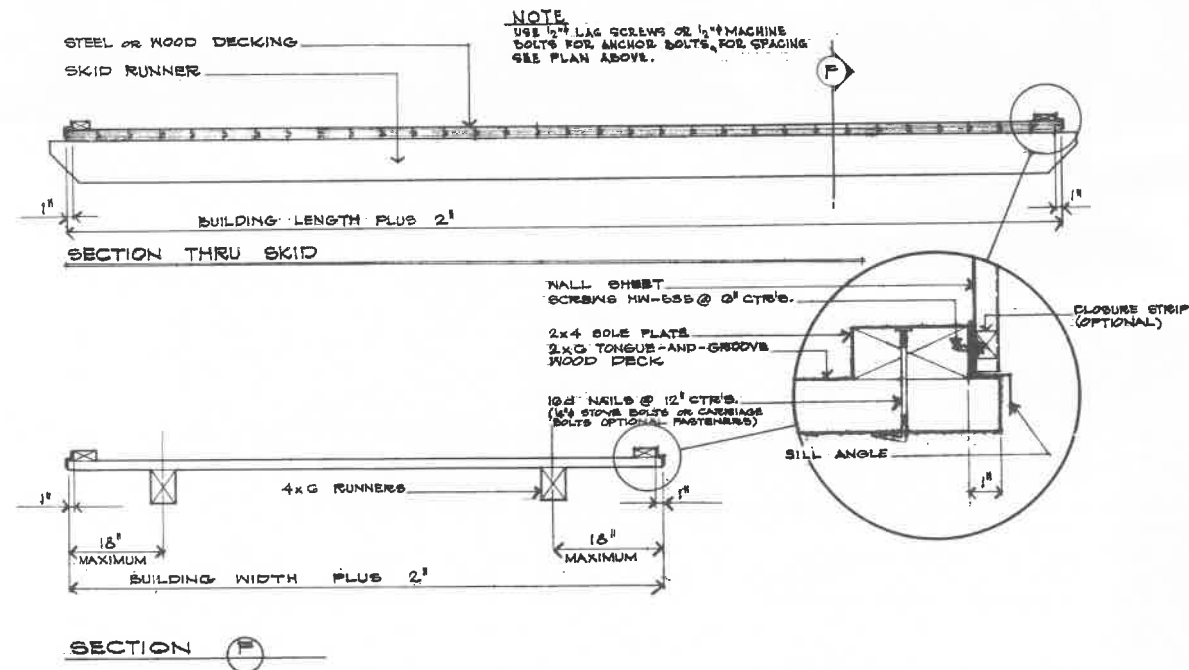
CERTAIN FEATURES OF THIS STRUCTURE ARE OR MAY BE COVERED BY ONE OR MORE OF THE FOLLOWING UNITED STATES PATENTS AND FOREIGN COUNTERPARTS THEREOF AND OTHER PENDING APPLICATIONS:

212,880 3,197,851 3,162,278

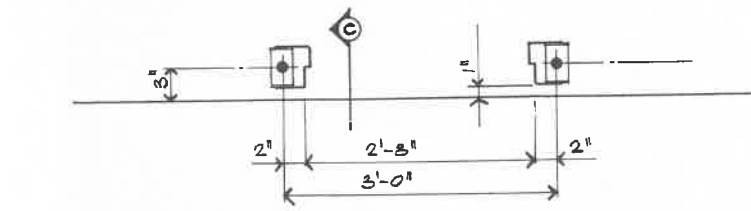
2,889,682 8,298,826



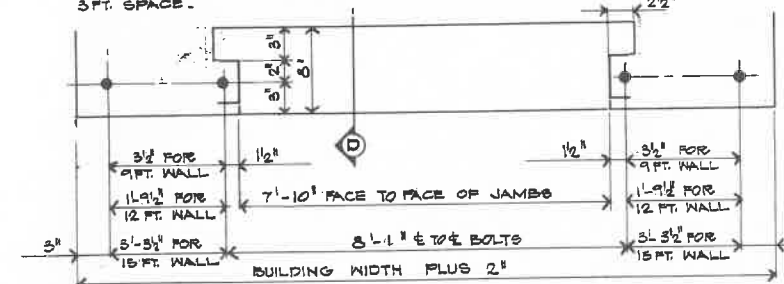
BASIC ANCHOR BOLT SETTING PLAN



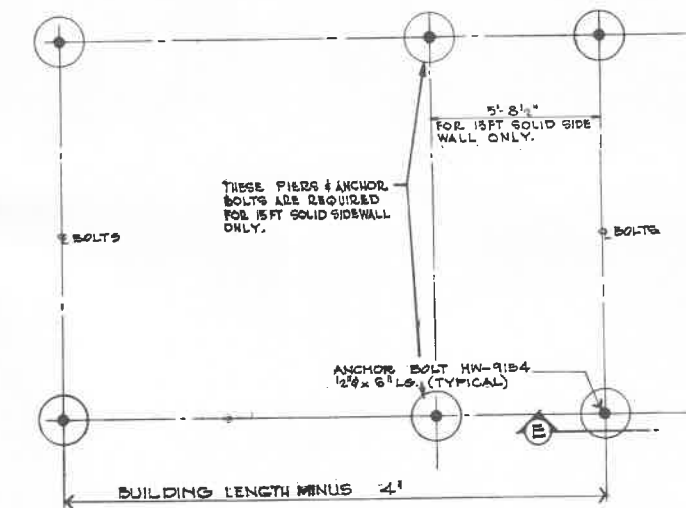
PLAN FOR 2870 SWING-OUT DOOR FOR 6 FT. WALL



PLAN FOR 2870 SWING-OUT DOOR FOR 9, 12 OR 15 FT. WALLS
INSERT WHERE DOOR REQUIRED. DOOR MAY BE LOCATED IN ANY STANDARD 3 FT. SPACE.

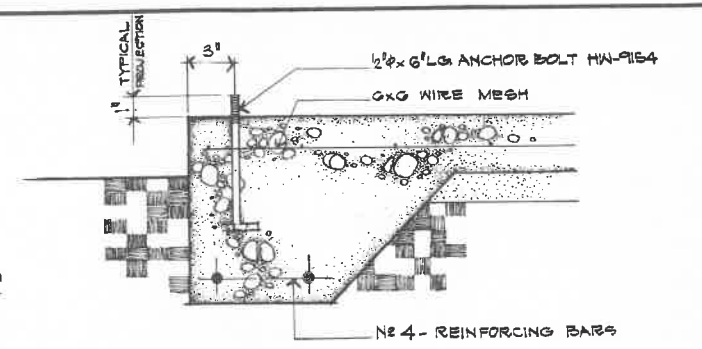


PLAN FOR 6 FT. WIDE OVERHEAD DOOR @ CENTER OF WALL

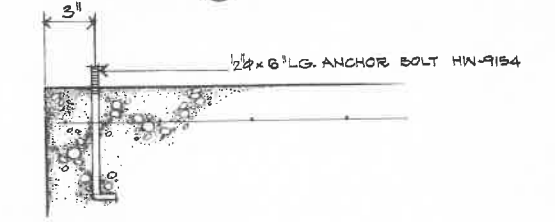


PLAN FOR PAD TYPE FOUNDATION
GIRTS MUST BE SUBSTITUTED FOR BILL ANGLE WHEN PADS ARE USED.

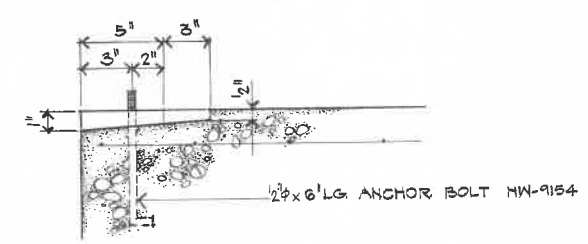
- NOTE:
- GRADE BEAMS AND SLABS SHOULD BE SIZED FOR BUILDING LOADS AND LOCAL SOIL CONDITIONS.
 - ALL ANCHOR BOLTS FOR CONCRETE FOUNDATIONS ARE 1/2\"/>



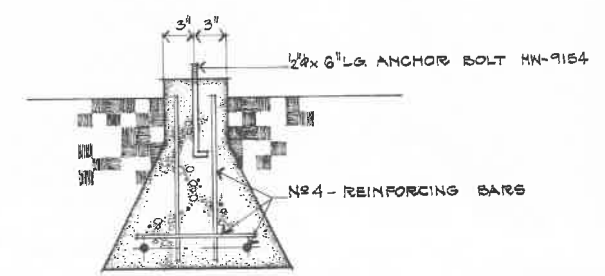
SECTION B



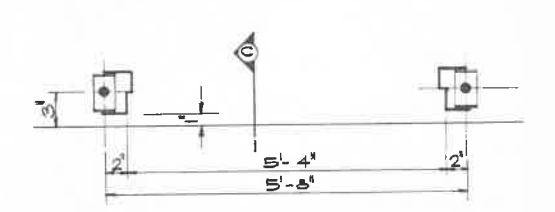
SECTION C



SECTION D



SECTION E



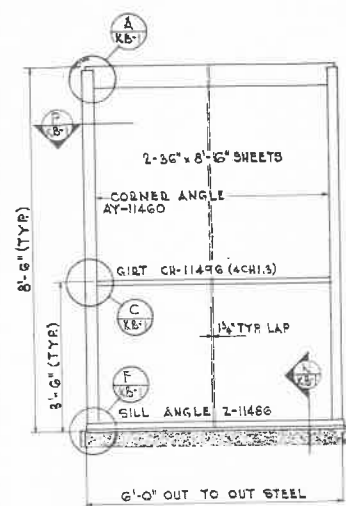
PLAN FOR 5470 DOUBLE SWING DOOR
5470 DOORS DO NOT FIT STANDARD BUILDING ANCHOR BOLT SPACINGS. RE-LOCATION OF ONE OR BOTH ANCHOR BOLTS IS REQUIRED TO OBTAIN THE ABOVE ARRANGEMENT.

NO.	REVISIONS	DATE	DRWN	CHKD.
1	FOR ISSUE TO TRUSS WALTERS AND LENGTH HW-9154 TO 6"	6-21-62		
2	LOCATED ANCHOR BOLTS FOR 15' WALL COL.	2-1-63		
3	GENERAL			
4	ADDED ANCHOR BOLT BRACING FOR 5470 DOOR	2-20-63		
5	GENERAL	2-28-63		

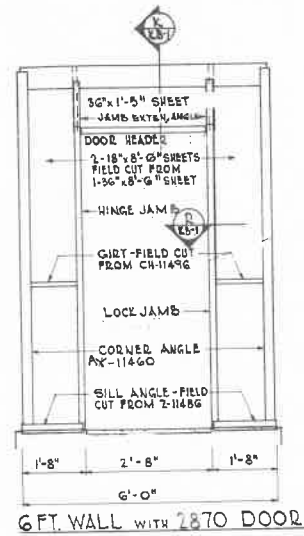
DATE	4-12-61	DRAWN	JOFF	CHECKED	GEY	A.E.O. No.	SHEET No.
SCALE	NONE	APPROVED		APPROVED			KB-2

Stran-Steel

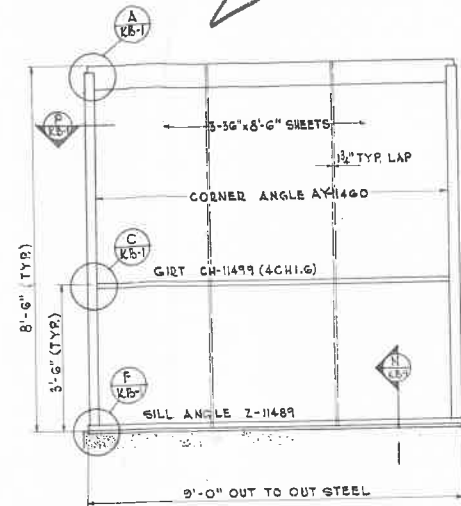
STRAN-STEEL CORPORATION
(UNIT OF NATIONAL STEEL)
ANCHOR BOLT SETTING PLAN
SKIP, SLAB, & PAD FOUNDATIONS
"KOMPAK" BUILDING (M3)



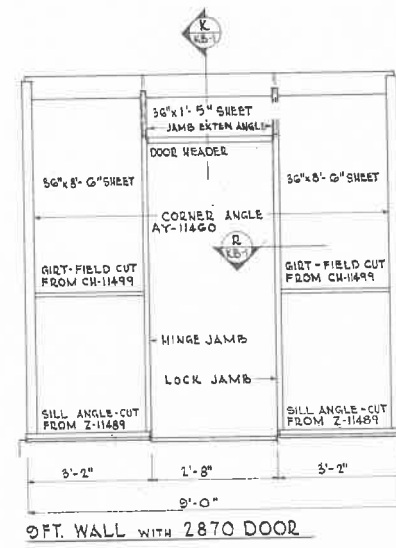
6 FT. SOLID WALL
6'-0" x 8'-6" WALLS



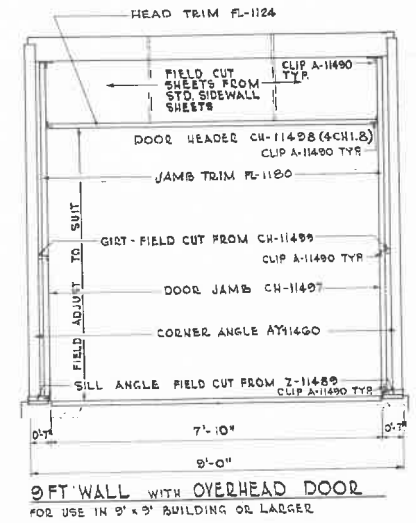
6 FT. WALL WITH 2870 DOOR



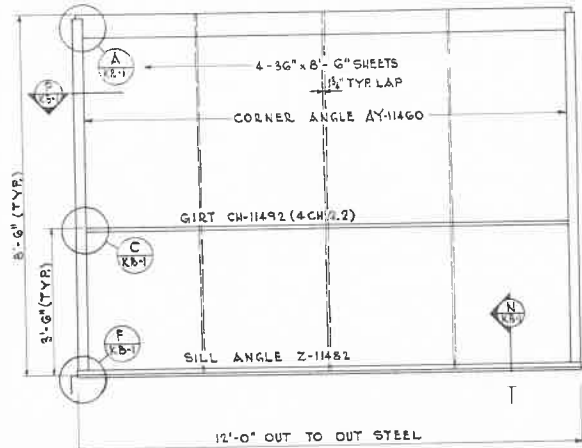
9 FT. SOLID WALL
9'-0" x 8'-6" WALLS



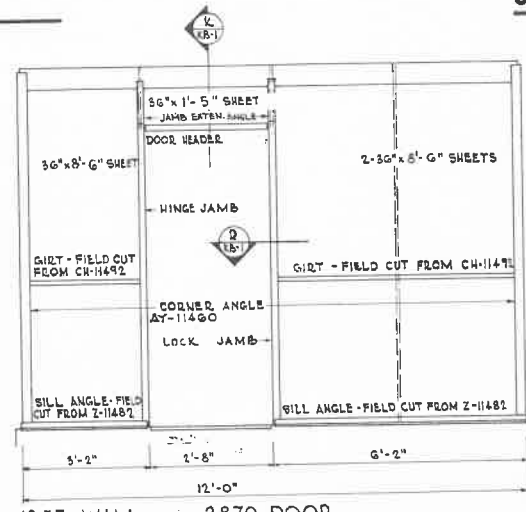
9 FT. WALL WITH 2870 DOOR



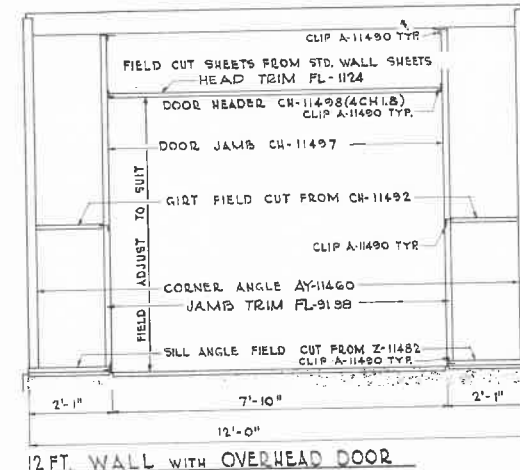
9 FT. WALL WITH OVERHEAD DOOR
 FOR USE IN 9' x 9' BUILDING OR LARGER



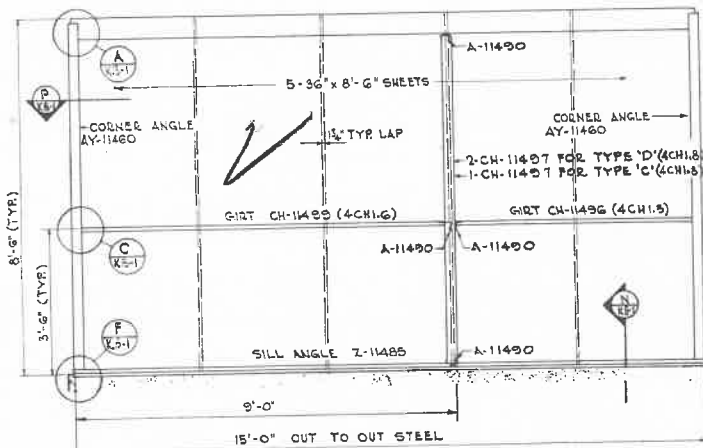
12 FT. SOLID WALL
12'-0" x 8'-6" WALLS



12 FT. WALL WITH 2870 DOOR
 FRAMING MAY BE REVERSED FOR DOOR AT OPPOSITE END

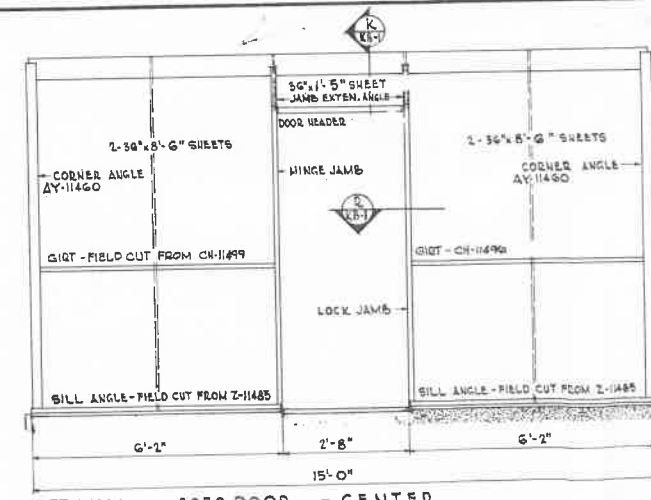


12 FT. WALL WITH OVERHEAD DOOR

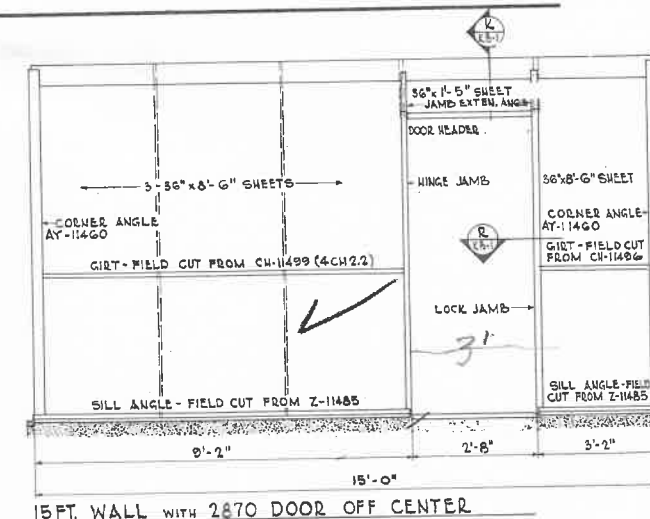


15 FT. SOLID WALL
15'-0" x 8'-6" WALLS

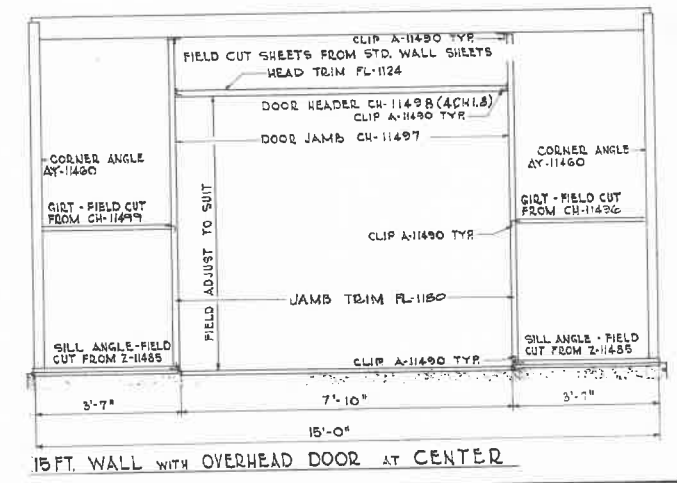
NOTE: FRAMING MAY BE REVERSED



15 FT. WALL WITH 2870 DOOR AT CENTER



15 FT. WALL WITH 2870 DOOR OFF CENTER
 FRAMING MAY BE REVERSED FOR DOOR AT OPPOSITE END



15 FT. WALL WITH OVERHEAD DOOR AT CENTER

- NOTES:**
1. STITCH ALL SIDELAPS AT 12" CENTERS WITH #10 x 1/2" SLOTTED HEX WASHER HEAD SELF TAPPING SCREW HW-535. FIELD DRILL HOLE WITH 1/8" DRILL. (DRILL SIZE MAY BE SPECIFIED AS N#30)
 2. SECURE SHEETS TO ALL GIRTS, SILL ANGLES AND PURLINS OR RAFTERS WITH #10 x 1/2" SCREW, HW-535 AT 6" CENTERS. FIELD DRILL HOLES WITH 1/8" DRILL
 3. THE FOLLOWING OPTIONAL MATERIAL WILL BE FURNISHED ON SPECIAL ORDER:
 SEALER HW-9239-1 FOR SIDELAP OF WALL SHEETING.
 CLOSURE HW-1126P FOR PERIMETER OF BUILDING AT SILL.
 TYPE 'D' BLDGS. HAVE 20 PSF LIVE LOAD & 25 PSF WIND LOAD.
 TYPE 'C' BLDGS. HAVE 30 PSF LIVE LOAD & 20 PSF WIND LOAD.
 ANY OTHER COMBINATIONS OF LIVE & WIND LOADS ARE NOT STANDARD AND MUST BE ORDERED SPECIAL.
 4. SEE ET-2 FOR SWING DOOR INSTALLATION AND PART MARKS (A-7080)
 - 5.

CERTAIN FEATURES OF THIS STRUCTURE ARE OR MAY BE COVERED BY ONE OR MORE OF THE FOLLOWING UNITED STATES PATENTS AND FOREIGN COUNTERPARTS THEREOF AND OTHER PENDING APPLICATIONS:

212,000 3,187,251 3,162,778
 3,223,872 3,319,423

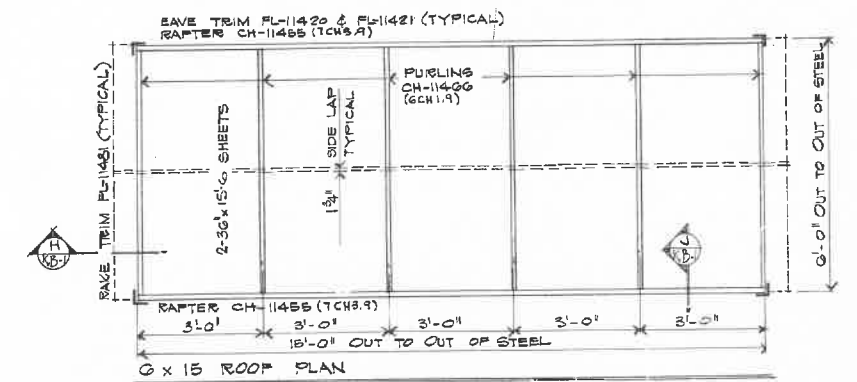
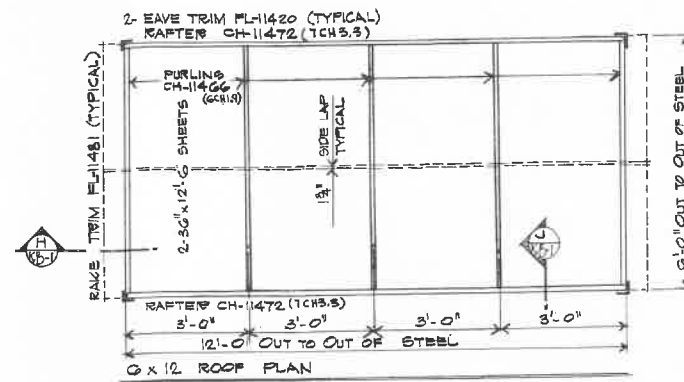
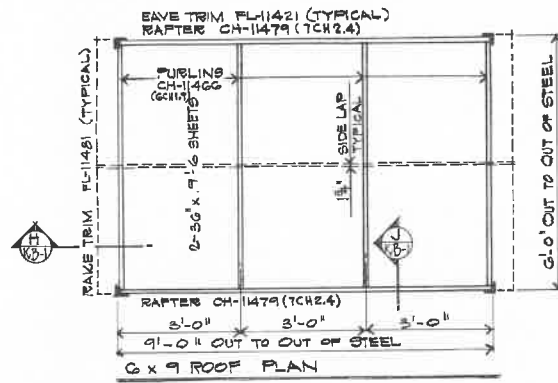
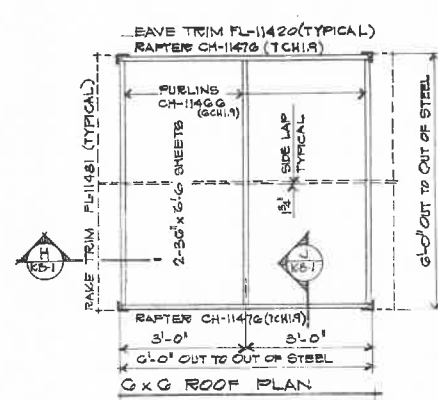
NO.	REVISIONS	DATE	DRWN	CHKD.
1	3000 FRAMING WAS 2000	2-2-64		
2	ADD 1/2" TO 1/4" JAMB	9-8-64		
3	ADD 1/2" TO 1/4" JAMB	2-2-64		
4	ADD 1/2" TO 1/4" JAMB	2-1-64		
5	ADD MATERIAL DESCRIPTION	2-2-64		
6	GENERAL	2-2-64		
7	GENERAL	1-1-71	PE	bmh

DATE 4-14-61
 SCALE 1/2" = 1'-0"

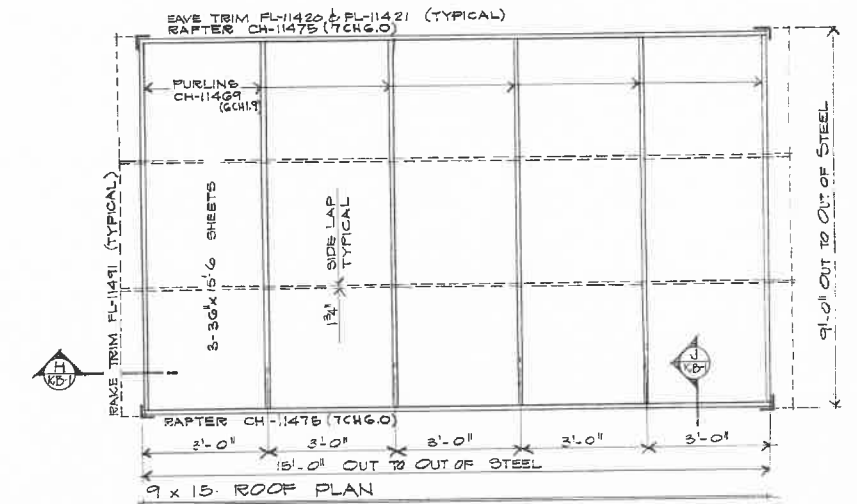
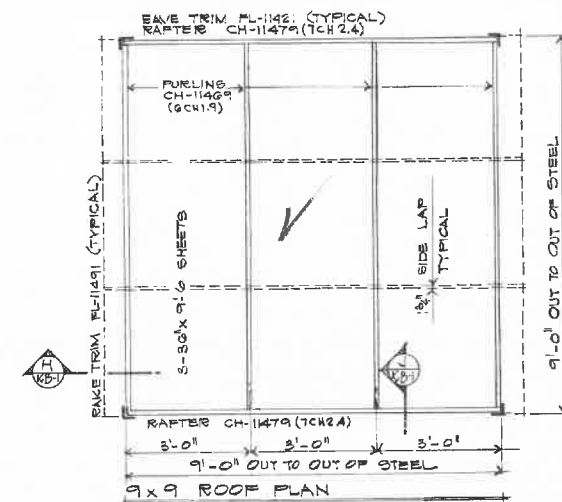
STRAN-STEEL CORPORATION
 (UNIT OF NATIONAL STEEL)
 WALL FRAMING & SHEETING PLAN
 FOR 20' & 30' LL BUILDINGS
 "KOMPAK" BUILDING (M3)

CHECKED GEY
 APPROVED WGT

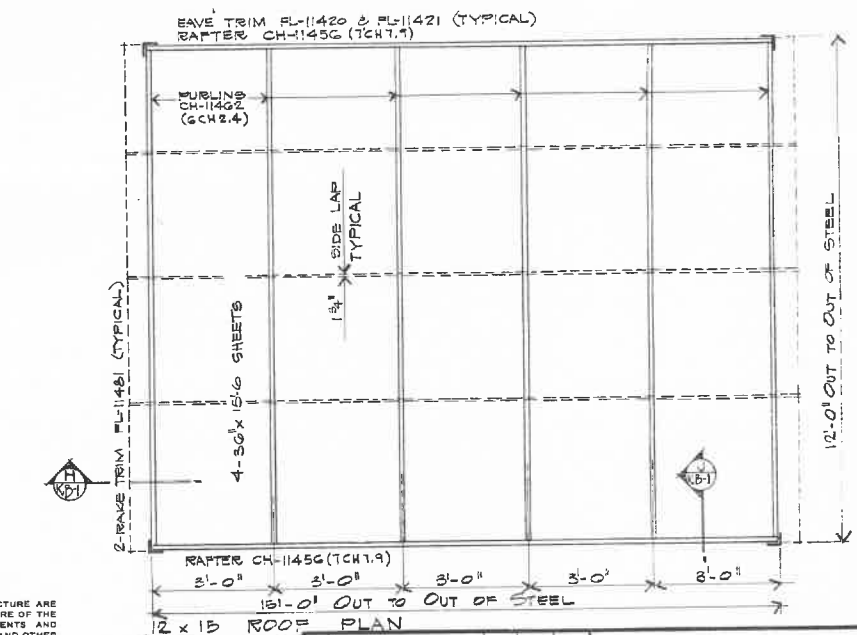
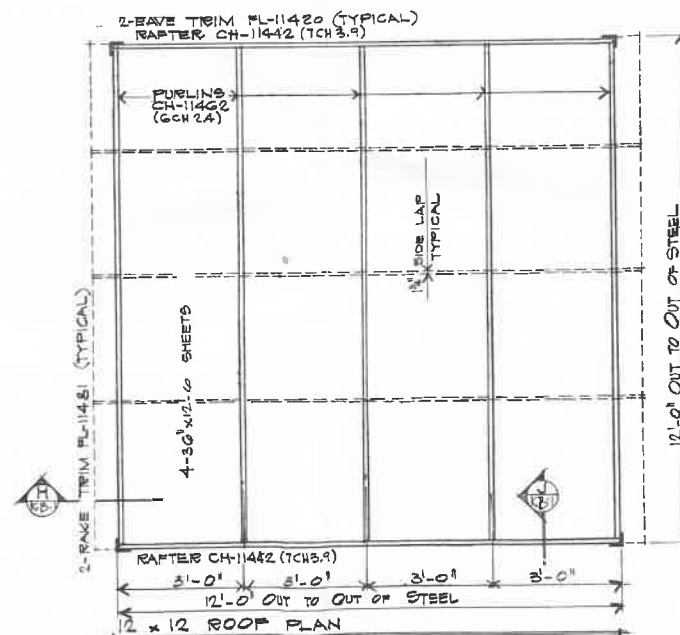
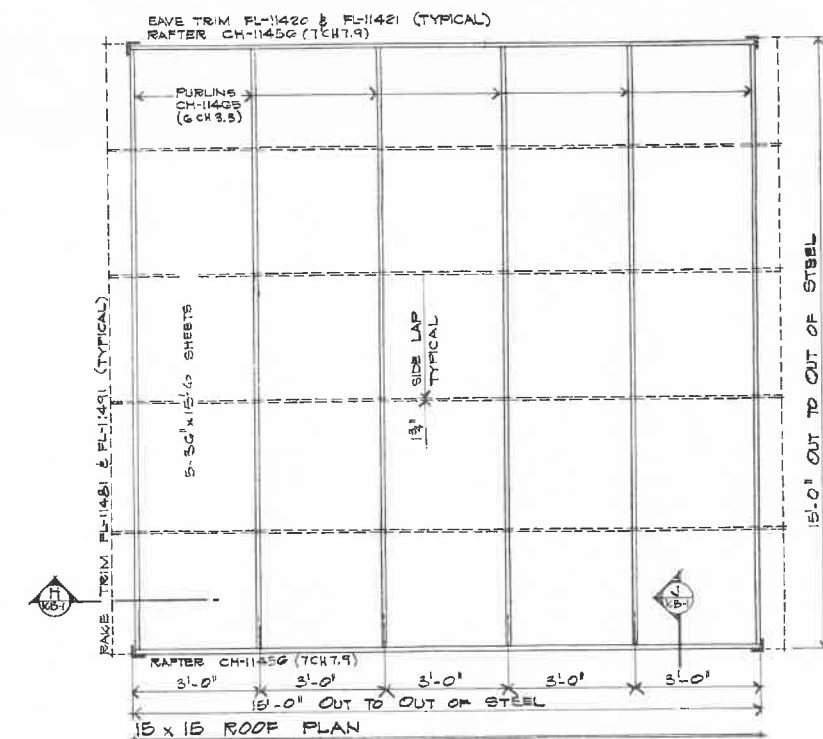
A.E.O. No. 3218
 SHEET No. A-7250
 K B-4



6 FT. WIDE ROOF FRAMING PLANS



9 FT. WIDE ROOF FRAMING PLANS



12 FT. WIDE ROOF FRAMING PLANS

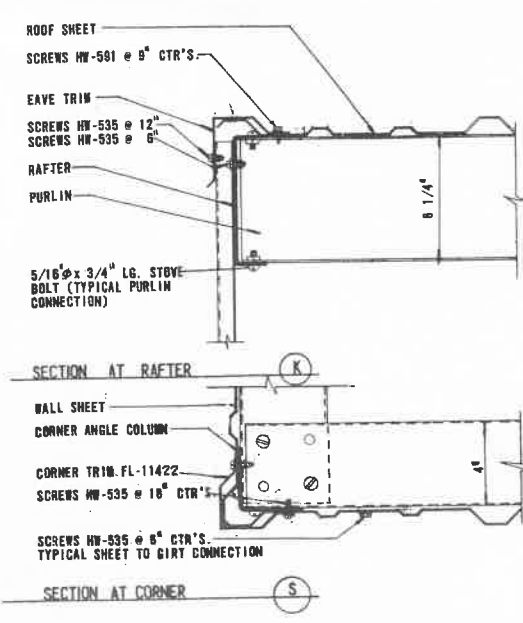
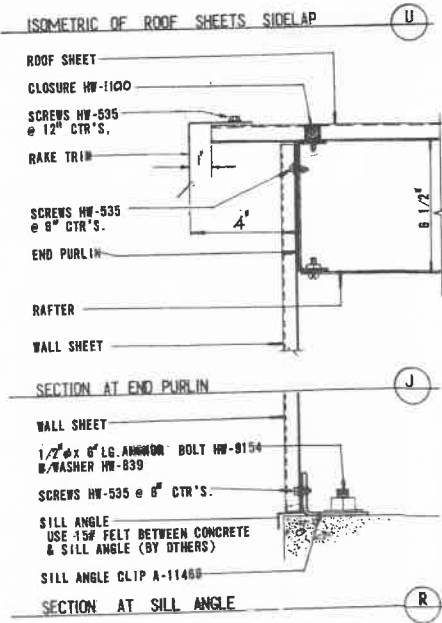
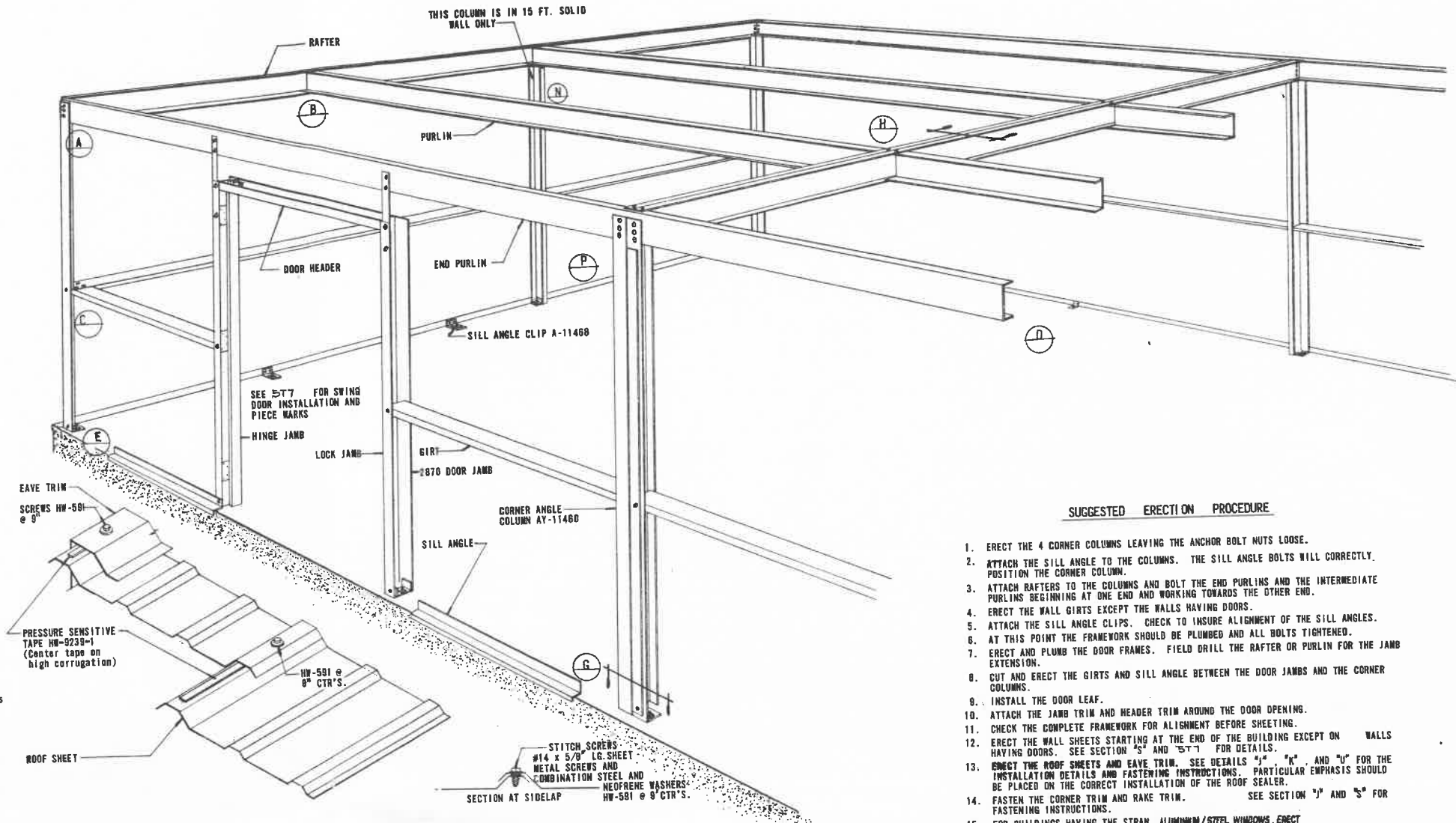
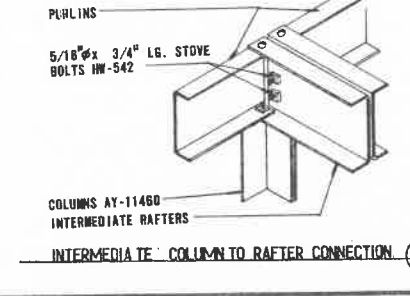
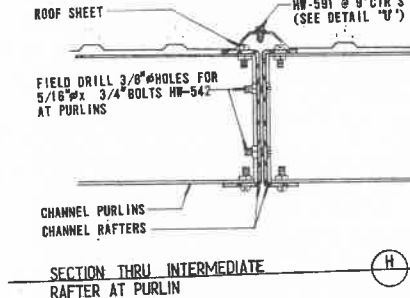
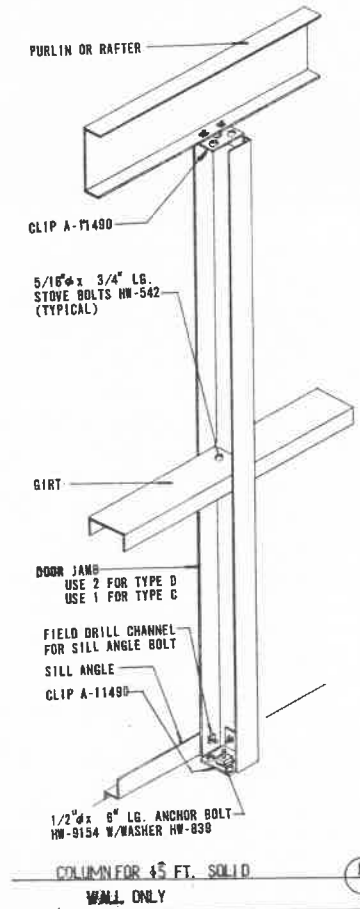
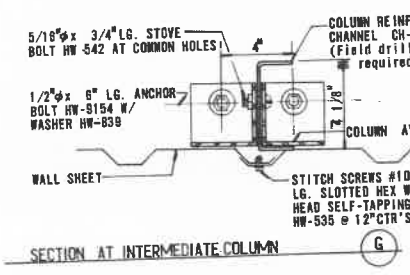
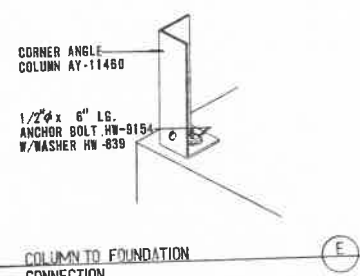
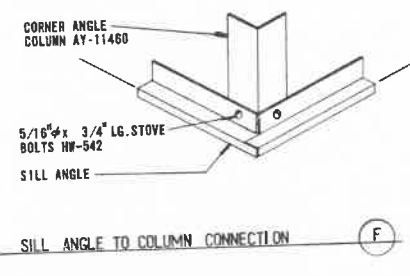
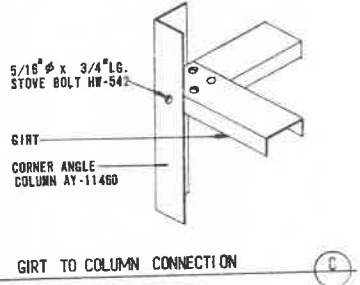
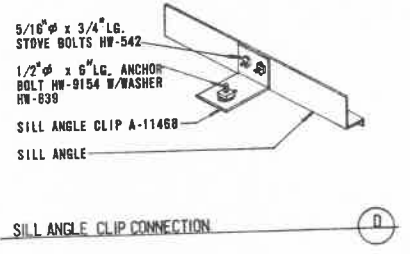
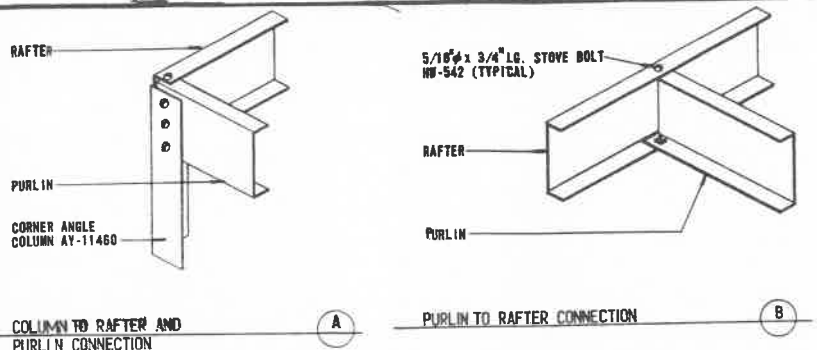
CERTAIN FEATURES OF THIS STRUCTURE ARE OR MAY BE COVERED BY ONE OR MORE OF THE FOLLOWING UNITED STATES PATENTS AND FOREIGN COUNTERPARTS THEREOF AND OTHER PENDING APPLICATIONS:
 3,112,080 3,197,281 3,162,270
 3,225,872 3,215,429

NOTES:

1. SEAL ALL SIDE LAPS OF SHEETING WITH 1/2" x 3/8" PRESSURE SENSITIVE TAPE (HW-9239-1).
2. SIDE LAPS OF SHEETS TO BE STITCHED WITH N614 SHEET METAL SCREWS WITH COMB. STEEL & NEOPRENE WASHERS HW-591 AT 9" CENTERS. DRILL OVERLAPPING SHEETS WITH 1/4" DRILL. DRILL OVERLAPPING SHEETS WITH 1/8" DRILL.
3. SECURE SHEETS TO ALL FURLING WITH N614 SHEET METAL SCREWS AND COMB. STEEL & NEOPRENE WASHERS (HW-591). ADJACENT TO RID, FIELD DRILL HOLES WITH N614 DRILL. SPACE SCREWS 3" OC. AT END FURLING. SPACE SCREWS 12" OC. AT INTERMEDIATE FURLING.

NO.	REVISIONS	DATE DRWN/CHKD.
1	FOR ISSUE TO TRADE	2-2
2	DATE & ADDED ENT. MARKS	2-2
3	SH-4455	2-27
4	GENERAL	2-27
5	ADDED MATERIAL DESCRIPTION	2-28
6	GENERAL	2-28
7	ENT. LENGTHS	3-17

Stran-Steel
 UNIT OF NATIONAL STEEL
 STRAN-STEEL CORPORATION
 HOUSTON, TEXAS
 GENERAL OFFICES
 HOUSTON, TEXAS
 ROOF FRAMING AND SHEETING PLAN
 80° LIVE LOADS
 "KOMPAK" BUILDING (M3)
 DATE 6-1-61
 SCALE 1/2" = 1'-0"
 DRAWN JOFF
 APPROVED WGT
 CHECKED JRS
 APPROVED RJA
 A.E.O. No. 3218
 SHEET No. KB-5



SUGGESTED ERECTION PROCEDURE

1. ERECT THE 4 CORNER COLUMNS LEAVING THE ANCHOR BOLT NUTS LOOSE.
2. ATTACH THE SILL ANGLE TO THE COLUMNS. THE SILL ANGLE BOLTS WILL CORRECTLY POSITION THE CORNER COLUMN.
3. ATTACH RAFTERS TO THE COLUMNS AND BOLT THE END PURLINS AND THE INTERMEDIATE PURLINS BEGINNING AT ONE END AND WORKING TOWARDS THE OTHER END.
4. ERECT THE WALL GIRTS EXCEPT THE WALLS HAVING DOORS.
5. ATTACH THE SILL ANGLE CLIPS. CHECK TO INSURE ALIGNMENT OF THE SILL ANGLES.
6. AT THIS POINT THE FRAMEWORK SHOULD BE PLUMBED AND ALL BOLTS TIGHTENED.
7. ERECT AND PLUMB THE DOOR FRAMES. FIELD DRILL THE RAFTER OR PURLIN FOR THE JAMB EXTENSION.
8. CUT AND ERECT THE GIRTS AND SILL ANGLE BETWEEN THE DOOR JAMBS AND THE CORNER COLUMNS.
9. INSTALL THE DOOR LEAF.
10. ATTACH THE JAMB TRIM AND HEADER TRIM AROUND THE DOOR OPENING.
11. CHECK THE COMPLETE FRAMEWORK FOR ALIGNMENT BEFORE SHEETING.
12. ERECT THE WALL SHEETS STARTING AT THE END OF THE BUILDING EXCEPT ON WALLS HAVING DOORS. SEE SECTION 'S' AND 'T' FOR DETAILS.
13. ERECT THE ROOF SHEETS AND EAVE TRIM. SEE DETAILS 'J', 'K', AND 'L' FOR THE INSTALLATION DETAILS AND FASTENING INSTRUCTIONS. PARTICULAR EMPHASIS SHOULD BE PLACED ON THE CORRECT INSTALLATION OF THE ROOF SEALER.
14. FASTEN THE CORNER TRIM AND RAKE TRIM. SEE SECTION 'J' AND 'S' FOR FASTENING INSTRUCTIONS.
15. FOR BUILDINGS HAVING THE STRAN ALUMINUM/STEEL WINDOWS, ERECT THE WINDOW IN CONJUNCTION WITH THE WALL SHEETS.

- NOTE:
1. HW-535 IS A #10 x 5/8" LG. SLOTTED HEX WASHER HEAD SELF TAPPING SCREW.
 2. HW-591 IS A #14 x 5/8" LG. SHEET METAL SCREW AND COMBINATION STEEL AND NEOPRENE WASHER.

NO.	REVISIONS	DATE	DRWN	CHKD.
1	CHG. SEAL	3-1-77	Pe	bmh
2	CHANGED SHEET NO. FROM 2 TO 3			
3	CHG. SEAL CHANNEL FROM 2 TO 3	4-5-77		
4	CHANGED FROM 12" TO 10" TEE W/ 1/2" DELETED SWING DOOR DETAILS	6-21-77		
5	ADDED COLUMN DETAILS FOR WALL	9-26-77		
6	ITEM 12 IN SECTION 'S' CHANGED	4-27-78		

DATE 4-13-81 DRAWN Joff APPROVED WET

SCALE NONE

CHECKED GEF APPROVED RBA

STRAN-STEEL CORPORATION (UNIT OF NATIONAL STEEL) GENERAL OFFICES HOUSTON, TEXAS

CONSTRUCTION DETAILS

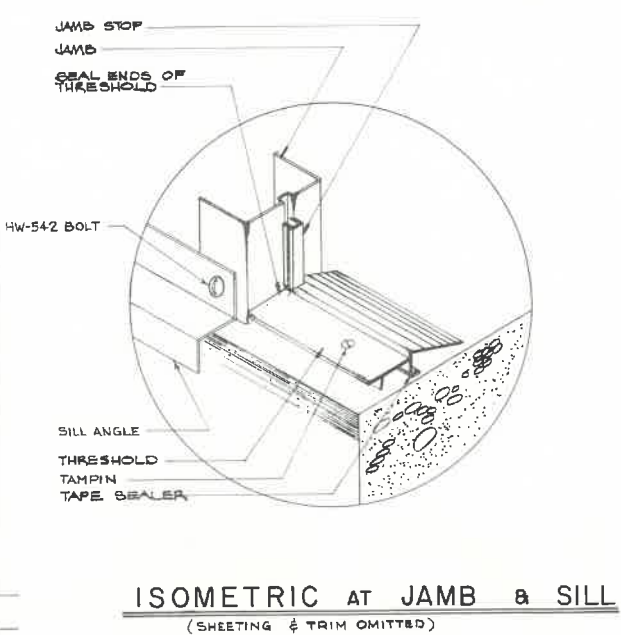
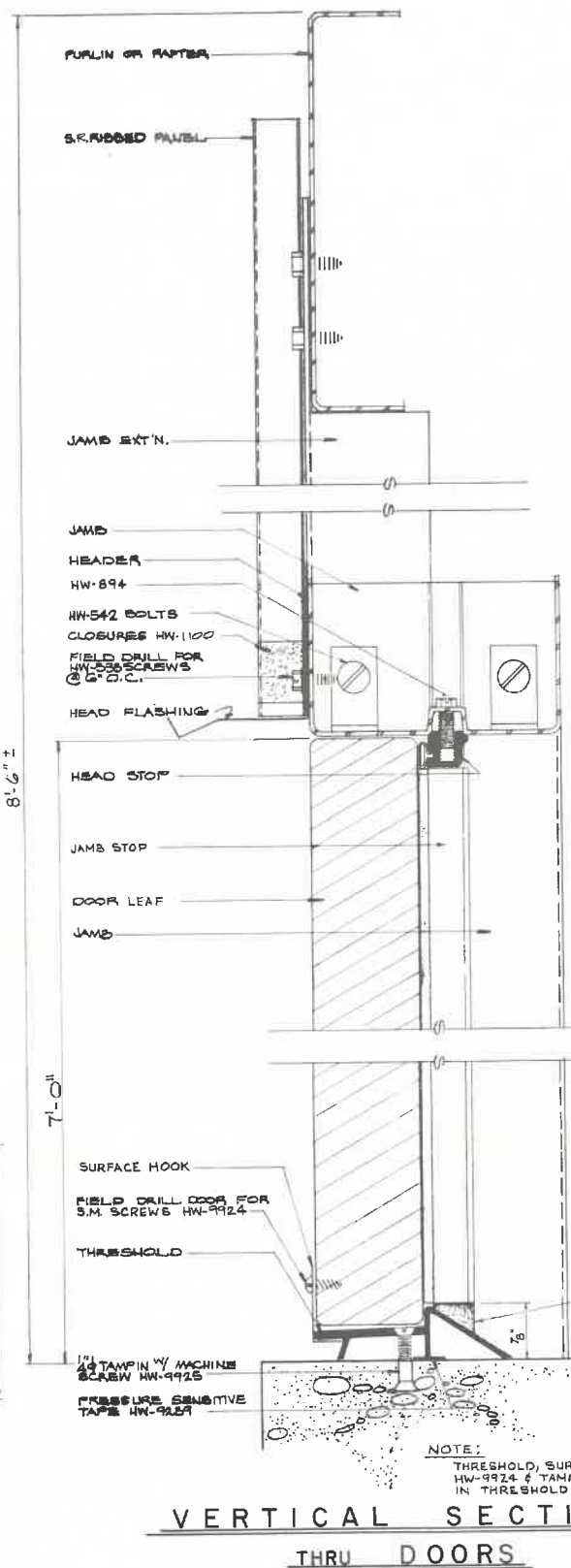
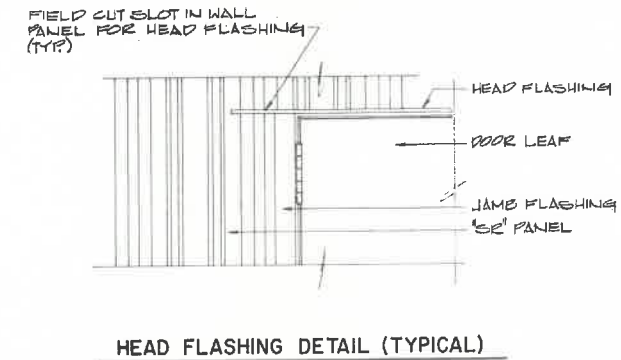
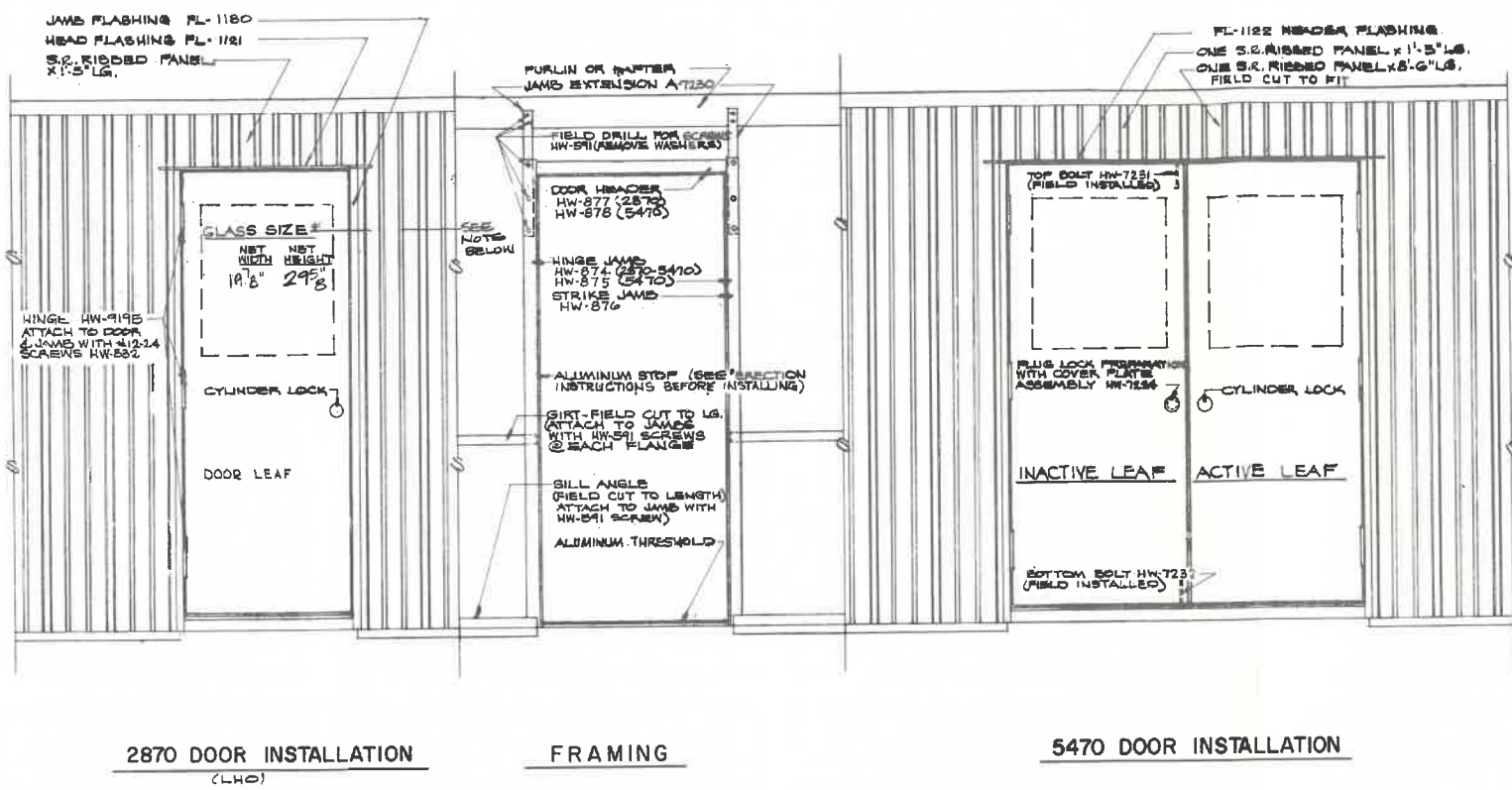
FRAMING AND SHEETING MULTIPLE

'KOMPAK' BUILDING (M-3)

A.E.O. No. 3218 SHEET No. KB-6

CERTAIN FEATURES OF THIS STRUCTURE ARE OR MAY BE COVERED BY ONE OR MORE OF THE FOLLOWING UNITED STATES PATENTS AND FOREIGN COUNTERPARTS THEREOF AND OTHER PENDING APPLICATIONS:

2,122,080 3,187,251 3,182,776
 2,225,572 3,318,469



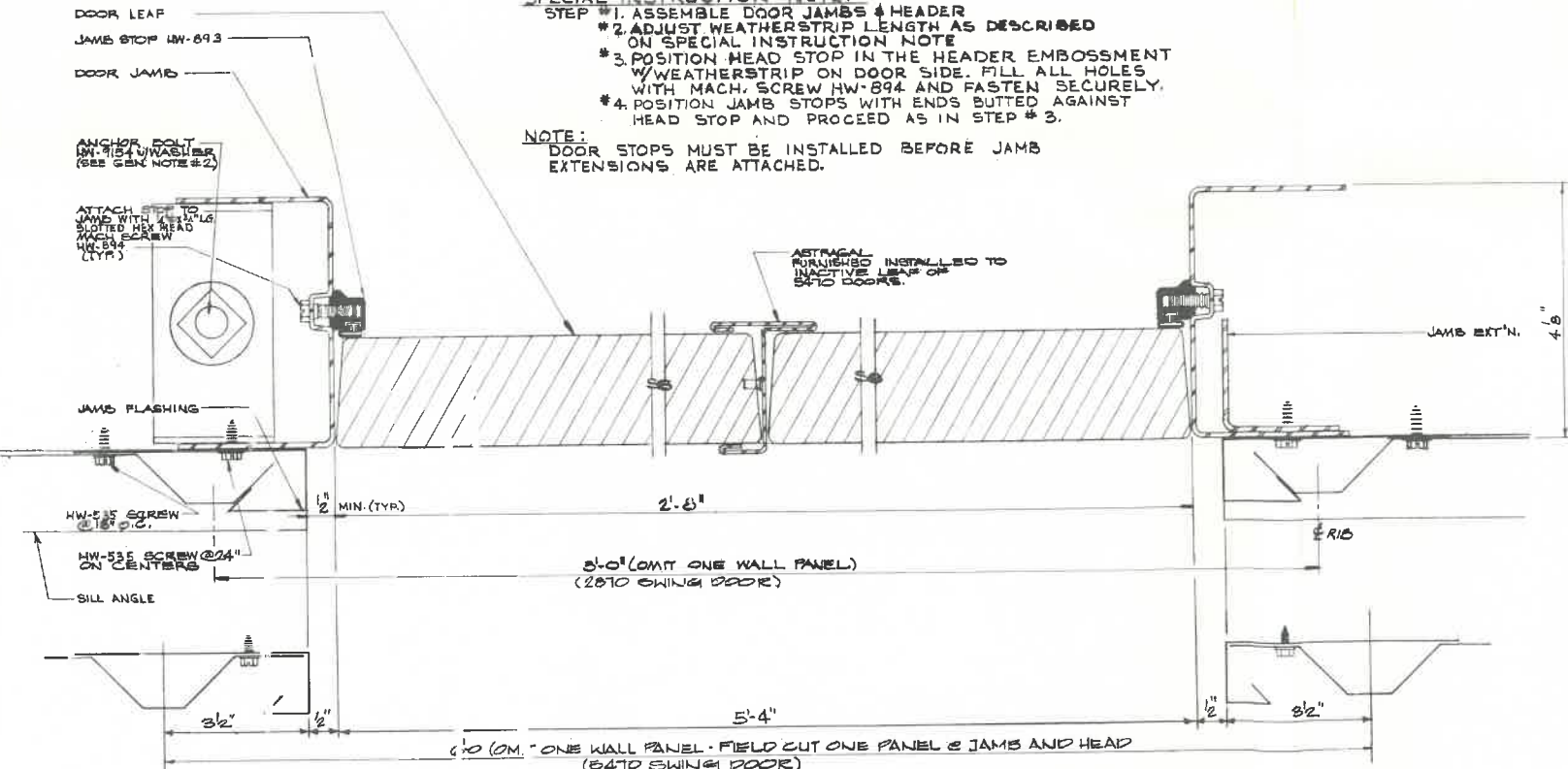
NOTE:
GLASS OPENING IN STD. DOOR LEAF MAY VARY IN HEIGHT DUE TO A CHANGE BEING MADE BY THE DOOR MANUFACTURER. PLEASE CHECK EACH LEAF TO INSURE THE PROPER HEIGHT OF GLASS IS ORDERED.
THE GLASS HEIGHT SHOWN FITS THE REVISED DOOR LEAF.
PREVIOUS DOOR LEAVES REQUIRED A 30" GLASS HEIGHT.

ELEVATIONS FOR SWING DOORS

ALUMINUM STOP INSTALLATION
EACH "ALUMINUM STOP" PACKAGE CONTAINS:
ONE (1) HEAD STOP W/ WEATHERSTRIP
TWO (2) JAMB STOPS W/ WEATHERSTRIP
1/4" X 3/4" LG. MACH. SCREWS HW-894

SPECIAL INSTRUCTION NOTE:
STEP #1. ASSEMBLE DOOR JAMBS & HEADER
#2. ADJUST WEATHERSTRIP LENGTH AS DESCRIBED ON SPECIAL INSTRUCTION NOTE
#3. POSITION HEAD STOP IN THE HEADER EMBOSSEMENT W/ WEATHERSTRIP ON DOOR SIDE. FILL ALL HOLES WITH MACH. SCREW HW-894 AND FASTEN SECURELY.
#4. POSITION JAMB STOPS WITH ENDS BUTTED AGAINST HEAD STOP AND PROCEED AS IN STEP #3.

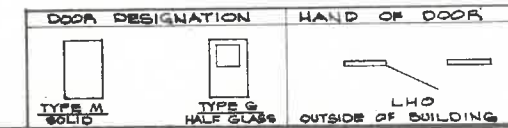
NOTE:
DOOR STOPS MUST BE INSTALLED BEFORE JAMB EXTENSIONS ARE ATTACHED.



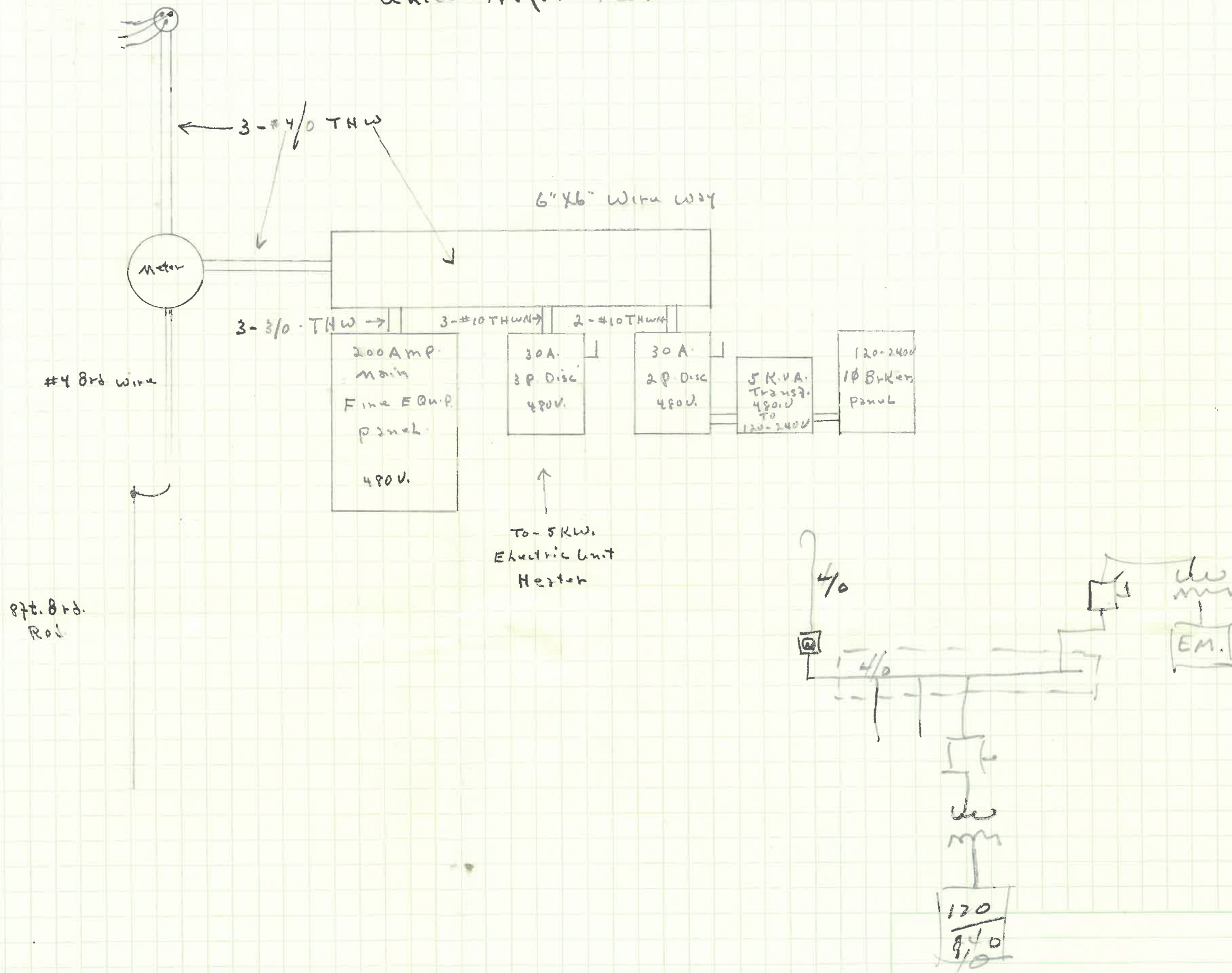
GENERAL NOTES:
1. ALL GLASS AND GLAZING BY OTHERS.
2. ANCHOR BOLTS WHEN REQ'D ARE FURNISHED ON SPECIAL ORDER. 2870 DOORS THAT ARE INSTALLED IN STANDARD LOCATIONS USE THE BASIC BLDG. ANCHOR BOLTS. SEE DRAWING K2-4 (ET 3) FOR STANDARD DOOR LOCATIONS.

CERTAIN FEATURES OF THIS STRUCTURE ARE OR MAY BE COVERED BY ONE OR MORE OF THE FOLLOWING UNITED STATES PATENTS AND FOREIGN COUNTERPARTS THEREOF AND OTHER PENDING APPLICATIONS:
212,000 3,157,251 3,162,278
3,225,872 3,315,429

REVISIONS		STRAN-STEEL CORPORATION		Stran-Steel	
0	AS-BUILT	DATE	2-29-68	DRAWN BY	J. ROSE
1	GLASS SIZE	DATE	6-27-68	CHECKED BY	WGT
2	GLASS SIZE REV.	DATE	7-17-68	APPROVED BY	WGT
3	GENERAL	DATE	3-17-68	APPROVED BY	WGT
INSTALLATION OF 2870 & 5470 SWING DOORS IN KOMPAK BUILDINGS				JOB NUMBER	AEO 3218
DATE	2-29-68	DRAWN	J. ROSE	CHECKED	WGT
SCALE		APPROVED	WGT	APPROVED	WGT
				SHEET NUMBER	A-1050



Unico - Napaheim, Ohio



Date